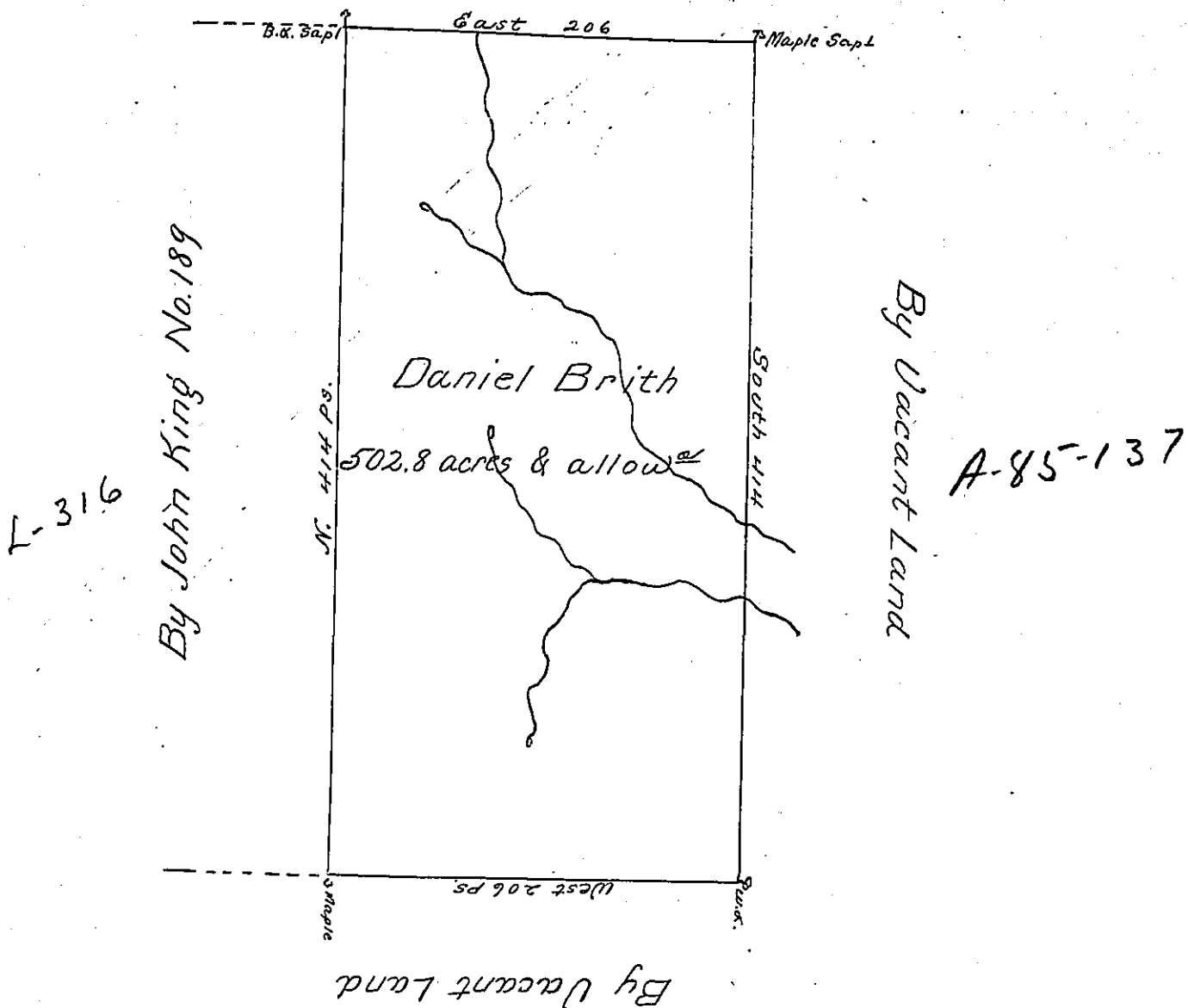


By Vacant Land  
A-85-139



The Draught of a Tract of Land called  
 Situate on the waters of Shuckeberry run  
 about one mile west of Susquehanna, in District  
 No. 18 in Northumberland County containing Five  
 hundred and two acres one hundred and forty  
 four perches, with usual allowance for Roads.

Survey'd 2nd. day of August Anns Dom.  
 1785 in Pursuance of the Warrant No. 141, dated  
 at Philadelphia 17th. Day of May Anns Dom.  
 1785 to Daniel Brith.

p.

Wm. Maclay D.S.

To John Lukens Esqr. S.G.  
 of Pennsylvania }

IN TESTIMONY that the above is a copy of the original remaining on file in  
 the Department of Internal Affairs of Pennsylvania, made  
 conformably to an Act of Assembly approved the 16th day of  
 February, 1833, I have hereunto set my Hand and caused  
 the Seal of said Department to be affixed at Harrisburg,  
 this first day of October 1901

James W. Latta  
 Secretary of Internal Affairs.